

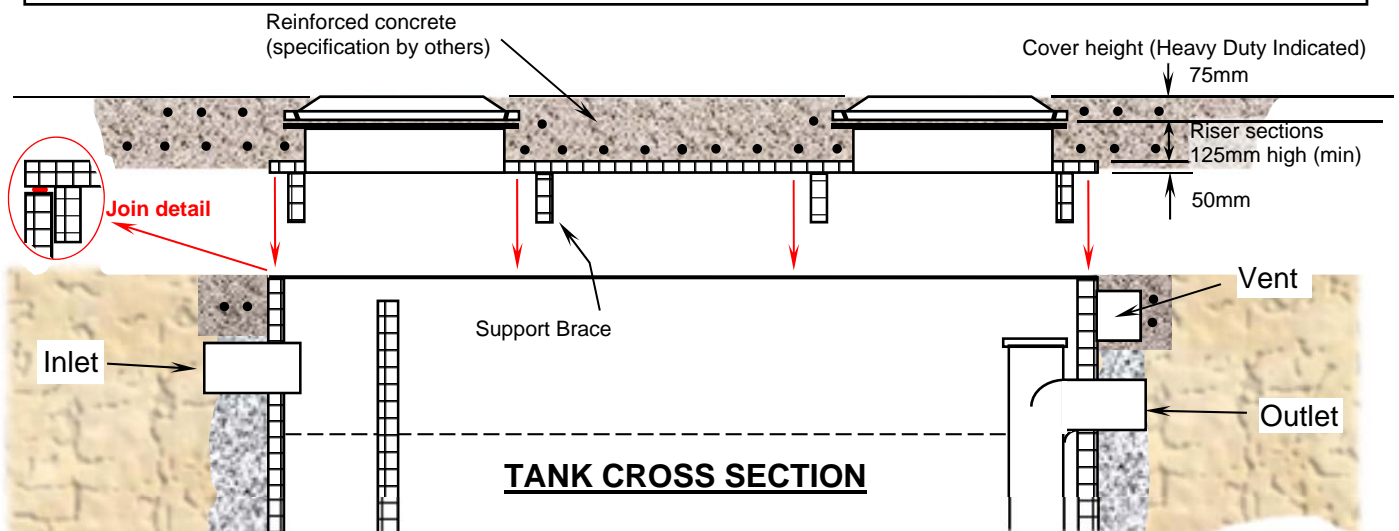
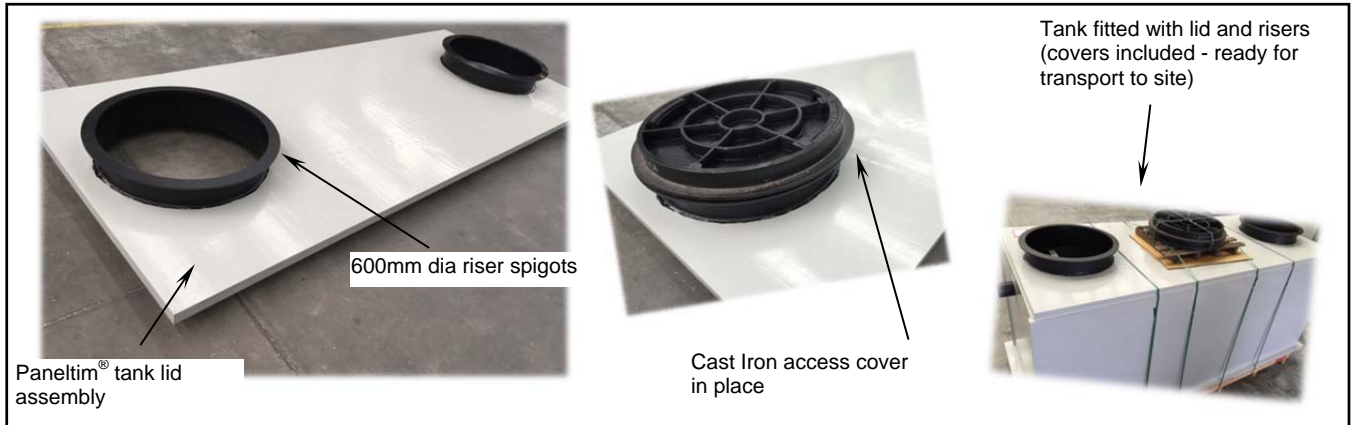
PANELTIM® ACCESS LIDS

For Below-Ground Tanks

INSTALLATION GUIDELINES

P 03 9587 2297
F 03 9587 1172
E info@vikingplastics.com.au

Industrial Plastic Fabrication



Description

Traditionally, below-ground tanks and interceptors need a full sized access cover placed on top of the tank. The access cover is rated to expected traffic conditions – eg: Light Duty, Medium Duty or Heavy Duty. Covers are multi-part cast iron or galvanized steel.

Viking has developed the Paneltim® access cover as an excellent alternative.

Instead of a heavy and expensive multi-part cover the Paneltim® lid is fitted with short riser spigots to suit 600mm dia access openings supplied with each lid. Paneltim® access lids are ideally suited to Medium and Heavy Duty applications where a tank is to be installed under a concrete paved roadway area. There are significant weight and price savings that benefit the installer and the end user.

Paneltim® access covers can be made to suit any tank size which makes a non-standard tank very easy to match a lid size to. They are also suitable for use on larger sized 'Thin-skin' tanks.

Installation

The Paneltim® access lid is installed in exactly the same way as a cast iron or galvanized steel cover. The Paneltim® lid is placed directly on top of the below ground trade waste tank. The top of the round access lids are to sit flush with the expected surface level. Once the lid is fitted, steel reinforcing is placed across the top of the tank. Concrete is then poured to form a structural slab (specifications to be determined by others on site). Concrete thickness is a minimum of 200mm but can be increased to suit specified requirements. The Paneltim® lid acts as form work to support the weight of the concrete when poured. ('acrow' props may be required on tanks larger than 5000lt) (The Paneltim® is not designed to form part of the structural integrity of the reinforced concrete).

- Lower installation weight
- Lower cost than traditional cast iron or steel covers
- Manufactured to suit just about any tank size and custom made tanks
- Easy to remove round covers that cannot fall inside the tank
- Lids will suit Paneltim® Tanks or Thin-Skin Tanks