

Acid Neutralising Tank

Installation Guide

Above Ground Page 2

Below Ground Page 3

© 2016

Tel: 03 9587 2297

Viking Plastics Engineering Pty Ltd. 143 Woodlands Drive Braeside, Victoria 3195
Fax: 03 9587 1172 | info@vikingplastics.com.au | www.vikingplastics.com.au



> **above-ground installation**

> typically used in laboratories and metalwork or art/craft workshops.

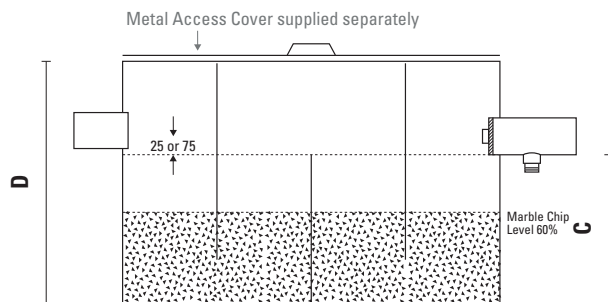
> these tanks have three baffles and must be partially filled with acid neutralising marble chips.

The baffle arrangement forces the liquid passing through the tank to filter through the marble chips, which have the effect of neutralising the water pH balance.

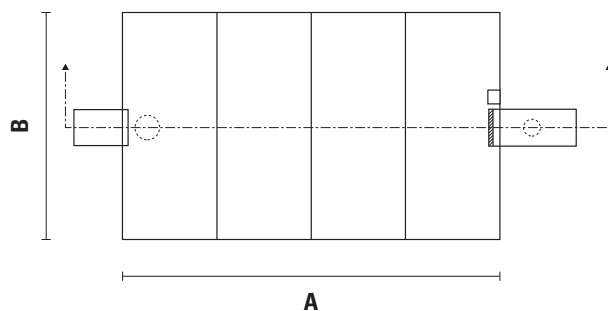
Above-ground

Capacity litres	External Tank Dimensions mm			
	Length	Width	Water	Height
67	600	375	300	450
100	600	400	400	550
150	700	470	470	620
200	800	500	500	650
250	900	530	530	730
600	1250	750	660	960
1000	1500	900	760	1060
1500	2000	900	830	1130
2000	2200	900	1000	1300

Dimensions do not include external frames (50mm all round)



Section View



Plan View (without lid)

Acid Neutralising Tank model VP6

> Manufactured from 6mm PVC and/or Polypropylene (PP), this tank is suitable for above-ground installations

> The tank is supplied with:

- a loose fitting lid
- three (3) equally spaced baffles
- bracket only for Test Block
- sampling valve socket (valve not included)

> When space limitations dictate, equivalent capacity tanks can be manufactured to order

> Cement mortar Test Block to be supplied and fitted by Trade Waste inspector

> Marble Chips are supplied separately
1 x 25kg bag required per 40 litre water capacity

> *Note: Tanks larger than 250 litres capacity are fitted with an external steel support frame. Allow 50mm all round.

> External tank height dimension (D) does not include the height of the lids (65mm)

> below-ground installation

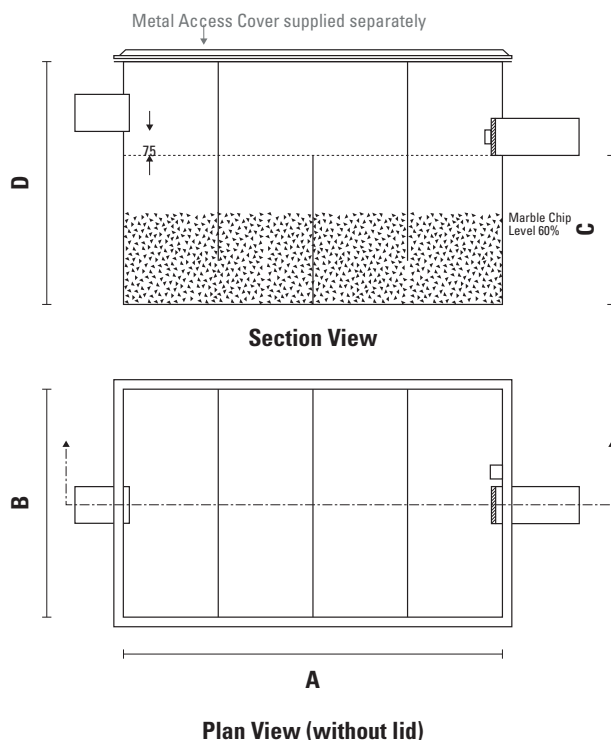
> typically used in laboratories and metalwork or art/craft workshops.

> these tanks have three baffles and must be partially filled with acid neutralising marble chips.

The baffle arrangement forces the liquid passing through the tank to filter through the marble chips, which have the effect of neutralising the water pH balance.

Below-ground

Capacity litres	Internal Dimensions mm			
	Length	Width	Water	Height
250	900	600	470	770
300	900	600	560	860
400	1250	600	540	840
500	1250	600	670	970
600	1250	750	640	940
750	1400	750	720	1020
1000	1400	750	960	1260
1500	1900	750	1060	1360
2000	2400	750	1120	1420



Acid Neutralising Tank model VP6

Below-ground

- > Manufactured from Polypropylene (PP), or Polyethylene (PE), this tank is suitable for below-ground installations
- > The tank must be surrounded with 100mm thick concrete walls and base
- > Note: During installation the tank must be adequately supported internally to prevent the walls from collapsing during concrete pour.
- > Inlet, outlet and vent pipes are 100mm nb. unless otherwise specified
- > Metal access covers (supplied separately) capable of being removed by one man should be fitted on top
- > Access covers are available in various types including concrete in-fill, solid top and tiling edge. Weight load must also be specified (pedestrian, car or heavy truck).
- > Tank dimensions and pipework positions conform to Trade Waste recommendations but may be arranged during manufacture to suit the installation requirement.
- > When space limitations dictate, equivalent capacity tanks can be manufactured to order
- > Marble Chips are supplied separately
1 x 25kg bag required per 40 litre water capacity
- > Below-ground tank includes a 50mm flat-rim flange and external keying strips