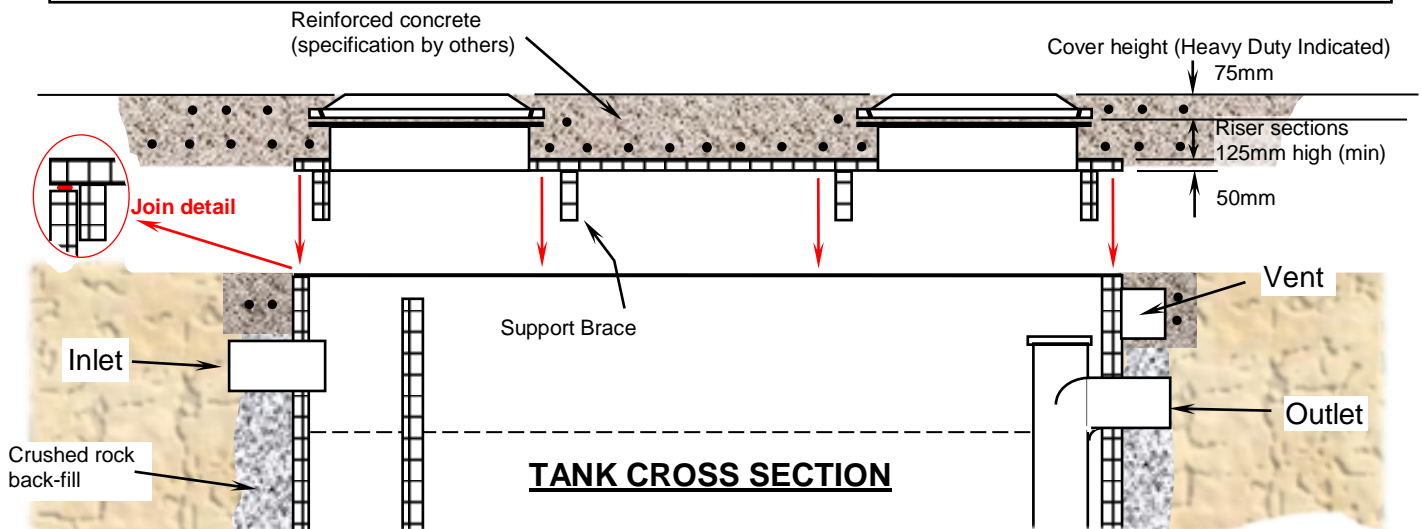
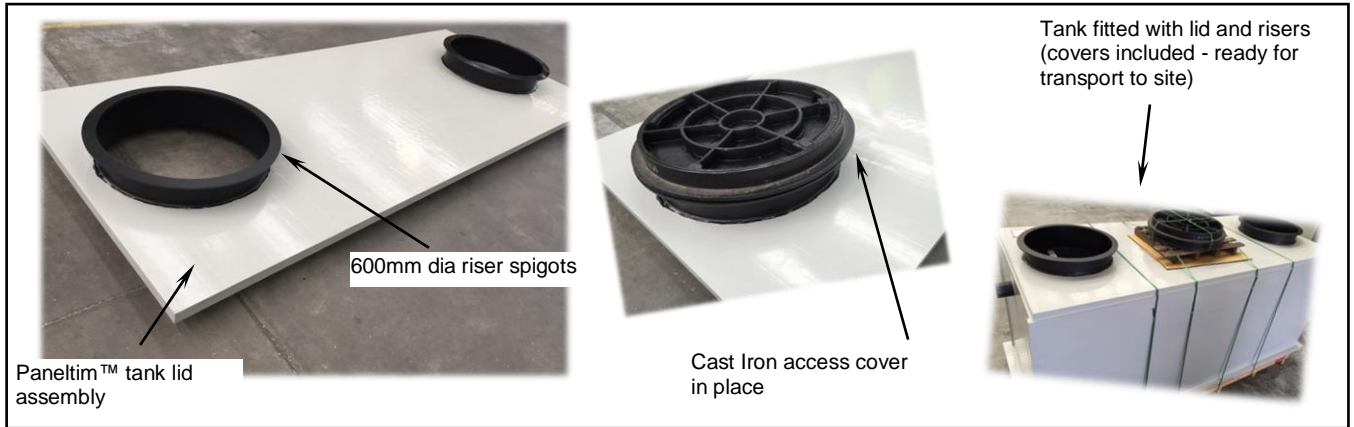


# **PANELTIM™ ACCESS LIDS** **For Below-Ground Tanks**

## **INSTALLATION GUIDLINES**



### **Description**

Below-ground tanks and interceptors generally need a full sized access cover placed on top of the tank. The access cover is rated to expected traffic conditions – eg: Light Duty, Medium Duty or Heavy Duty.

Traditionally, access covers are made from multi-part cast iron or galvanised steel. Viking has developed the Paneltim access cover as an excellent alternative.

There are significant weight and price savings that benefit the installer and the end user.

Instead of a heavy and expensive multi-part cover the Paneltim lid is fitted with short riser spigots to suit 600mm dia access openings supplied with each lid. Paneltim access lids are ideally suited to Medium and Heavy Duty applications where a tank is to be installed under a concrete paved roadway area.

Paneltim access covers can be made to suit any tank size which makes a non-standard tank very easy to match a lid size to.

### **Installation**

The Paneltim access lid is installed in exactly the same way as a cast iron or galvanised steel cover. The Paneltim lid is placed directly on top of the below ground trade waste tank. The top of the round access lids are to sit flush with the expected surface level. Once the lid is fitted, steel reinforcing is placed across the top of the tank. Concrete is then poured to form a structural slab (specifications to be determined by others on site). Concrete thickness is a minimum of 200mm but can be increased to suit specified requirements. The Paneltim lid acts as form work to support the weight of the concrete when poured. It is not designed to form part of the structural integrity of the reinforced concrete.

- Lower installation weight
- Lower cost than traditional cast iron or steel covers
- Manufactured to suit just about any tank size and custom made tank
- Easy to remove round covers that cannot fall inside the tank
- Lids will suit Paneltim Tanks or Thin-Skin Tanks

- > For installation over below-ground tanks.
- > The cover selected must be appropriate for the expected traffic load.  
i.e. pedestrian traffic, small passenger vehicles (cars) or large commercial vehicles (trucks).

Dimensions mm Length x Width	Type		
	Light Duty 3 Tonne	Medium Duty (Single-point load capacity) 8 Tonne	Heavy Duty 20 Tonne
450 x 450	•	•	•
600 x 450	•	•	•
600 x 600	•	•	•
750 x 450	•	•	•
750 x 600	•	•	•
750 x 750	•	•	•
900 x 450	•	•	•
900 x 600	•	•	•
900 x 750	•	•	•
900 x 900	•	•	•
1250 x 600	•	•	•

## Covers (Concrete In-Fill type) model VP20

- > For installation over below-ground tanks
- > Covers longer than 600mm are supplied as multi-part
- > Commonly hot-dip galvanised finish
- > Cast iron covers also available
- > Covers are available as either
  - Concrete In-Fill
  - Solid-top
  - with tiling edge

- > For installation over below-ground tanks.
- > The cover selected must be appropriate for the expected traffic load.  
i.e. pedestrian traffic, small passenger vehicles (cars) or large commercial vehicles (trucks).

Dimensions mm Length x Width	Type		
	Light Duty	Medium Duty	Heavy Duty
	3 Tonne	8 Tonne	20 Tonne
1250 x 750	•	•	•
1250 x 900	•	•	•
1400 x 600	•	•	•
1400 x 750	•	•	•
1400 x 900	•	•	•
1900 x 600	•	•	•
1900 x 750	•	•	•
2400 x 750	•	•	•
2400 x 900	•	•	•
2900 x 900	•	•	•
4000 x 900	•	•	•
4000 x 900	•	•	•

## Covers (Concrete In-Fill type) model VP20

- > For installation over below-ground tanks
- > Covers longer than 600mm are supplied as multi-part
- > Covers are fabricated mild steel with hot-dip galvanised finish
- > Cast iron covers also available
- > Covers are available as either
  - Concrete In-Fill
  - Solid-top
  - with tiling edge
- > Custom sizes also available
- > Covers are also available as an open grate  
i.e. for stormwater pits etc.